



# COUNTERFLOW CELLULAR DRIFT ELIMINATORS

## ACCU-PAC®

Brentwood's Counterflow Cellular Drift Eliminators are specifically designed to achieve maximum drift removal.



## Features

- Patented Mechanical Assembly technology yields glue-free packs.
- Modules nest with adjoining modules, eliminating gaps between packs and providing seamless drift removal.
- Can be field-cut for tight fits without sacrificing structural integrity.
- Able to span up to 6 feet, requiring fewer supports to minimize air blockage.
- Available in material meeting Cooling Technology Institute (CTI) Standard 136.
- UV-protected material is available with AccuShield technology.



## Counterflow Cellular Drift Eliminators

Brentwood's AccuPac® Counterflow Cellular Drift Eliminators are constructed of an alternating series of corrugated and wave PVC sheets, assembled to form closed cells. The closed cell structure yields the greatest surface area for droplet capture in a given volume. Brentwood's latest generation of cellular drift eliminators are specifically engineered for counterflow applications to maximize drift removal efficiency and minimize pressure drop.

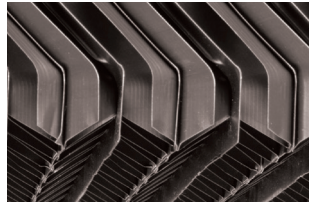
### Benefits

#### CFUltra

CFUltra is the highest performing drift eliminator in the industry, with a drift rating 20-50% better than any other product on the market. Its performance has been independently tested and verified by a CTI Drift multi-test agency, yielding drift loss results of 0.0004%, down to 0.00025%.

#### CF80MAx

The industry-standard CF80MAx offers drift loss of 0.0005%. It eliminates the need for double layers to achieve high drift removal efficiency and features beveled drainage tips to reduce pressure drop by up to 25%.

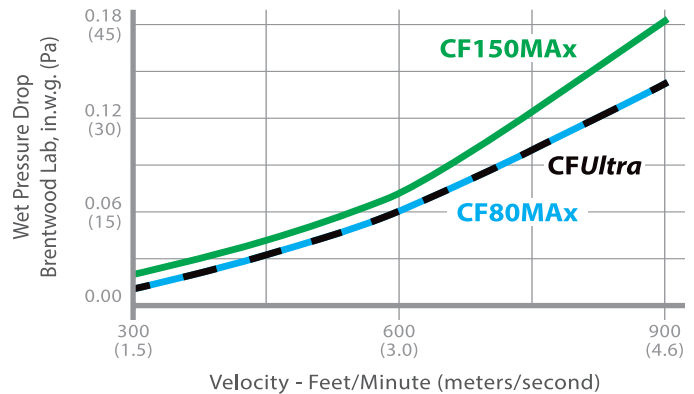


Beveled Drainage Tips

#### CF150MAx

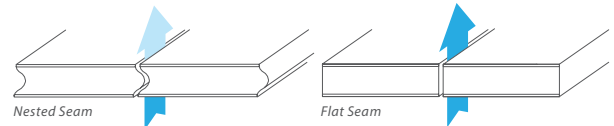
For applications where extremely low drift ratings are not required, CF150MAx provides a cost-effective solution with drift loss of 0.001%.

### PRESSURE DROP

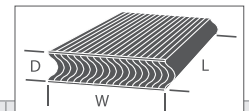


### NESTED VS. FLAT SEAMS

Brentwood drift eliminators utilize a nested seam, which provides for reduced bypass compared to flat-seam designs.



## COUNTERFLOW CELLULAR DRIFT ELIMINATOR PRODUCT DETAILS



| Model                                    | Cell Size    | Module Specifications – Inches (mm) |                        |                    | Sheet Thickness (Nominal, after forming) | Dry Weight  | Max. Span**  | Drift Loss             |
|--|--------------|-------------------------------------|------------------------|--------------------|--|---|--------------|------------------------|
|  |              | Depth                               | Width                  | Standard Lengths*  |  |   |              |                        |
| CFUltra***<br>ECC Diploma no. 21.12.017  | 0.86" (21.8) | 5.25" (133)                         | 12" (305)<br>18" (457) | 36-144" (610-3658) | Standard: 0.013" (0.33)                  | 1.6 lbs/ft <sup>2</sup> (7.8 kg/m <sup>2</sup> )  | 4 ft (1.2 m) | 0.0004%<br>to 0.00025% |
|  |              |                                     |                        |                    | Heavy Duty: 0.020" (0.51)                | 2.2 lbs/ft <sup>2</sup> (10.7 kg/m <sup>2</sup> ) | 6 ft (1.8 m) |                        |
| CF80MAx***<br>ECC Diploma no. 10.07.485  | 0.86" (21.8) | 5.25" (133)                         | 12" (305)<br>18" (457) | 36-144" (610-3658) | Standard: 0.013" (0.33)                  | 1.6 lbs/ft <sup>2</sup> (7.8 kg/m <sup>2</sup> )  | 4 ft (1.2 m) | 0.0005%                |
|  |              |                                     |                        |                    | Medium: 0.015" (0.38)                    | 1.8 lbs/ft <sup>2</sup> (8.8 kg/m <sup>2</sup> )  | 6 ft (1.8 m) |                        |
|  |              |                                     |                        |                    | Heavy Duty: 0.020" (0.51)                | 2.2 lbs/ft <sup>2</sup> (10.7 kg/m <sup>2</sup> ) | 6 ft (1.8 m) |                        |
| CF150MAx***<br>ECC Diploma no. 10.07.486 | 1.50" (38.1) | 5.25" (133)                         | 12" (305)<br>18" (457) | 36-144" (610-3658) | Standard: 0.015" (0.38)                  | 1.0 lbs/ft <sup>2</sup> (4.9 kg/m <sup>2</sup> )  | 4 ft (1.2 m) | 0.001%                 |
|  |              |                                     |                        |                    | Heavy Duty: 0.020" (0.51)                | 1.4 lbs/ft <sup>2</sup> (6.8 kg/m <sup>2</sup> )  | 5 ft (1.5 m) |                        |

\* Standard lengths in 1-ft (305 mm) increments up to 6 ft (1829 mm) and in 2-ft (610 mm) increments over 6 ft (1829 mm).

\*\* Tested at a maximum air temperature of 115°F (46°C) with 2-inch-wide (51 mm) supports.

\*\*\* CFUltra, CF80MAx, and CF150MAx have been third-party tested and are compliant with Eurovent performance standards. These standards are not linked with Brentwood's published pressure drop or drift ratings. Brentwood participates in the ECP programme for Drift Eliminators. Check on-going validity of certificate: [www.eurovent-certification.com](http://www.eurovent-certification.com).



BRENTWOOD INDUSTRIES, INC.

brentwoodindustries.com  
coolingtower@brentw.com  
+1.610.236.1100

