

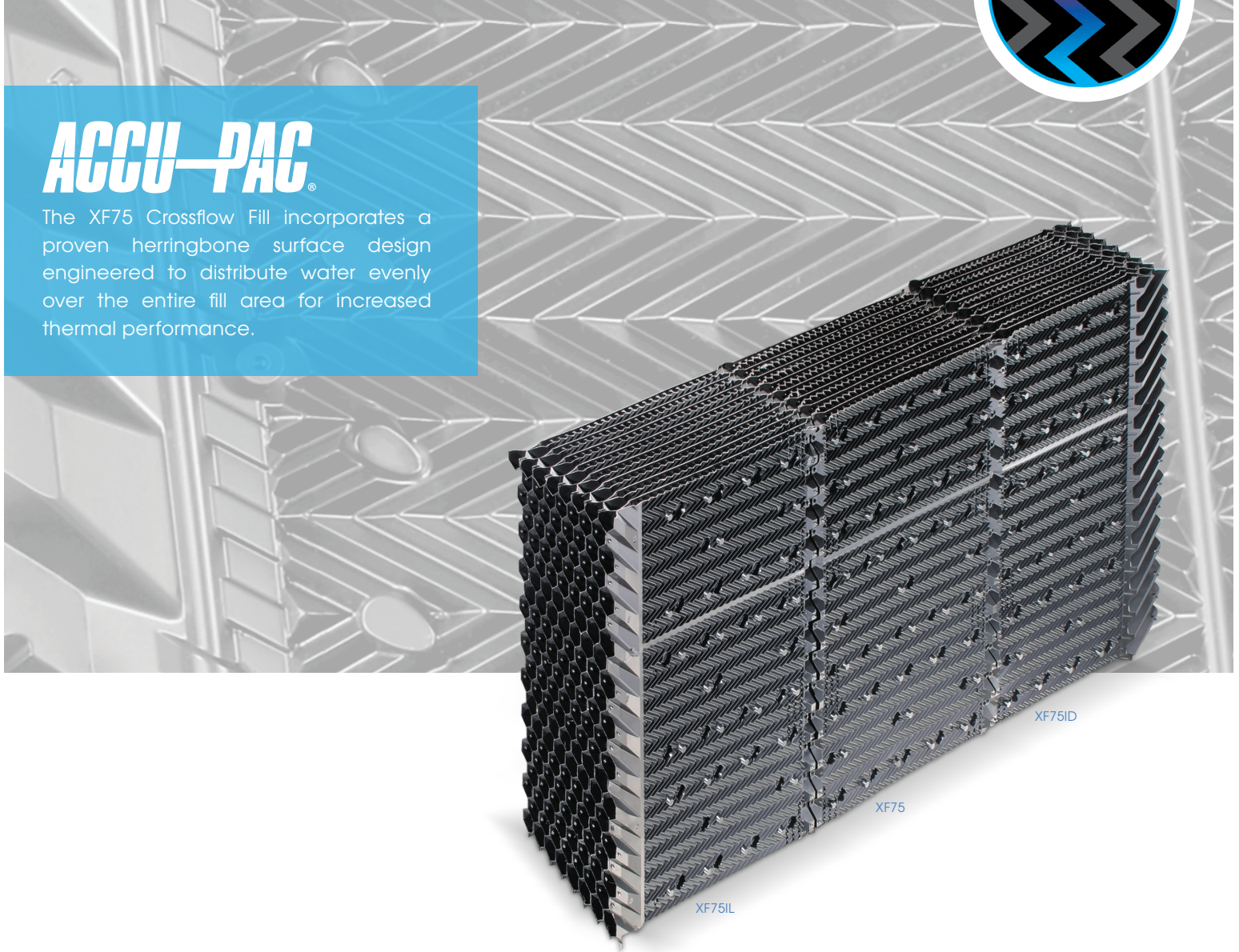


XF75 HERRINGBONE FILM FILL MEDIA



ACCU-PAC®

The XF75 Crossflow Fill incorporates a proven herringbone surface design engineered to distribute water evenly over the entire fill area for increased thermal performance.



Features

- Superior air and water management for optimal thermal performance.
- Engineered herringbone surface for even water distribution.
- Honeycomb bonded edges on the air inlets and outlets.
- Bottom-supported by Brentwood's XF Support System for durability and ease of installation.
- Available in material meeting Cooling Technology Institute (CTI) Standard 136



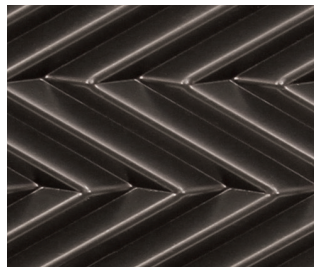
Herringbone Film Fill Media

AccuPac® Crossflow Herringbone Fill utilizes a proven herringbone surface design to distribute water evenly over the entire fill area for high thermal performance. The fill packs have honeycomb bonded edges on the air inlets and outlets, plus interlocking offsets that space the sheets to form strong, stackable packs. Herringbone fills with integrated inlet louvers (XF75IL) and drift eliminators (XF75ID) complete this efficient, high-performance, crossflow media system.

Benefits

XF75

XF75 packs are available with a 5° or 10° angle for easy installation in package crossflow towers used in HVAC and light industrial applications. Specially designed for today's higher capacity cooling towers where high water loading and air velocities are standard, they replace the OEM hanging sheets with solid modules of rigid PVC, or HPVC, film pack. Once installed, this system forms a long-term, trouble-free replacement for the OEM material, and since it is bottom supported, XF75 allows for the basin to be easily cleaned and maintained.



Herringbone Surface

XF SUPPORT SYSTEM

The XF Support System is designed specifically for Brentwood's XF75-series of crossflow herringbone film fills. This heavy duty, easy-to-install, PVC system includes base supports, fill support beams, and front and back retainers in a variety of sizes and configurations made specifically to fit each cooling tower. The support design allows for maximum weight distribution over increased surface area while ensuring ease of access for basin cleaning.



Support Detail

HERRINGBONE FILL PRODUCT DETAILS

PRODUCT	SURFACE AREA	SHEET SPACING	SHEETS PER FOOT	MEDIA PACK SIZES: Depth (D), Width (W), Length (L) – Inches (mm)		
				MINIMUM	MAXIMUM	STANDARD
XF75 XF75IL XF75ID* ECC Diploma no. 10.07.484	51 ft ² /ft ³ (167.4 m ² /m ³)	0.75" (19 mm)	16	D: 12" (305) W: 6" (153) L: 36" (915)	D: 24" (610) W: 12" (305) L: 144" (3658)	D: 24" (610) W: 12" (305) L: 72" (1829), 96" (2439), 120" (3048), or 144" (3658)

* XF75ID has been third-party tested and is compliant with Eurovent performance standards. These standards are not linked with Brentwood's published drift ratings. Brentwood participates in the ECP programme for Drift Eliminators. Check on-going validity of certificate: www.eurovent-certification.com.

NOMINAL GAUGE		DRY WEIGHT	
mils	mm	lbs / ft ³	kg / m ³
10	0.25	1.7	27.2
15	.38	2.4	38.4



BRENTWOOD INDUSTRIES, INC.

brentwoodindustries.com
 coolingtower@brentw.com
 +1.610.236.1100

