

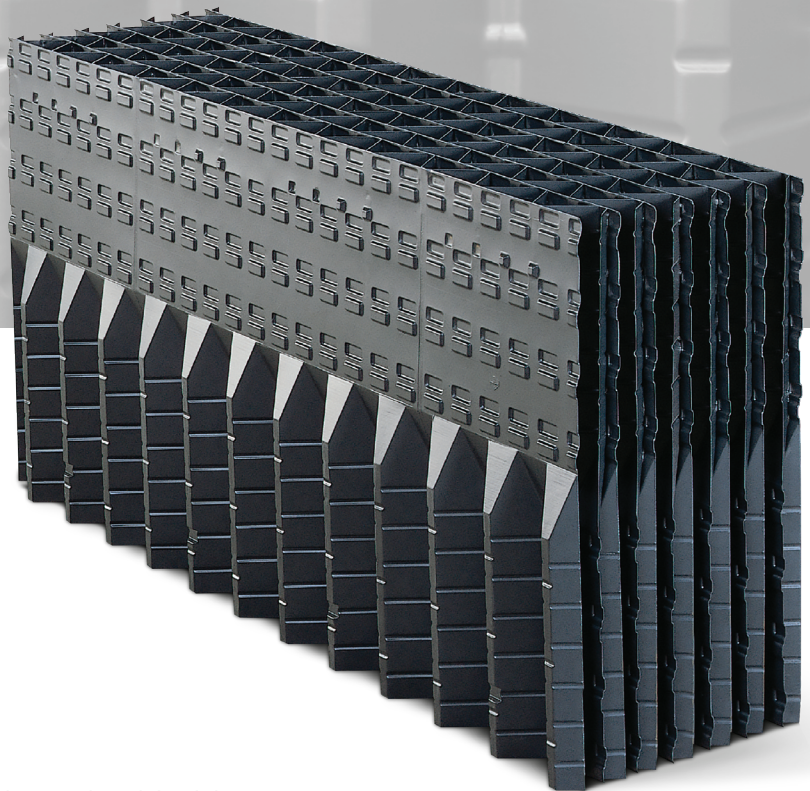


VF5000 ANTI-FOULING FILM FILL



ACCU-PAC[®]

Brentwood's VF5000 anti-fouling fill provides consistent performance with the highest concentration of suspended solids.



Features

- Anti-fouling design.
- Bonded edge with dedicated bond points for added strength and durability.
- For use in applications where circulating water contains high levels of suspended solids, such as water from high cycles of concentration, rivers, or seawater.
- Enhanced structural integrity due to a combination of flat stiffeners and corrugated segments.
- Available in material meeting Cooling Technology Institute (CTI) Standard 136.

Efficiency



Fouling Resistance





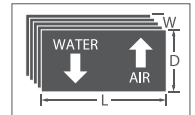
VF5000 Anti-Fouling Film Fill

Brentwood's VF5000 vertical-fluted fill features vertical flow channels with large openings and minimal microstructure to allow for high water film velocities and high shear stresses, inhibiting biofilm formation, and thereby, reducing fouling.

Applications

Brentwood's AccuPac VF5000 is the most fouling resistant fill in our lines of anti-fouling modular film fills. Built with rigid triangular, vertically oriented flutes, VF5000 is designed for the most demanding fouling applications. With only 98.4 m²/m³ (30 ft²/ft³) of specific surface area, water film thickness is optimized, providing maximum water film velocity, and therefore, the highest shear stresses to maintain surface cleanliness.

With over 28,300 m³ (1,000,000 ft³) installed in demanding applications serving steel production, pulp & paper, mining, food processing, refining and power production applications, VF5000 has been the fill of choice when critical operations cannot withstand cooling disruptions due to downtime caused by fill plugging, fill cleaning, etc. With a top layer of CF1900 cross-fluted fill acting as a water redistribution layer, thermal performance of the fill section is maximized, while cleanliness of the entire fill section is maintained.



VF5000 ANTI-FOULING FILM FILL PRODUCT DETAILS

PRODUCT	SURFACE AREA	SHEET SPACING	FLUTE ANGLE	MEDIA PACK SIZES: Depth (D), Width (W), Length(L) – Millimeters (inches)		
				MINIMUM	MAXIMUM	STANDARD
VF5000	98 m ² /m ³ (30 ft ² /ft ³)	50 mm (2.0")	0°	D: 610 (24) W: 153 (6) L: 305 (12)	D: 610 (24) W: 610 (24) L: 3658 (144)	D: 610 (24) W: 305 (12) or 610 (24) L: 1220 (48), 1829 (72), 2439 (96), or 3048 (120)



BRENTWOOD INDUSTRIES, INC.

brentwoodindustries.com
coolingtower@brentw.com
+1.610.236.1100

