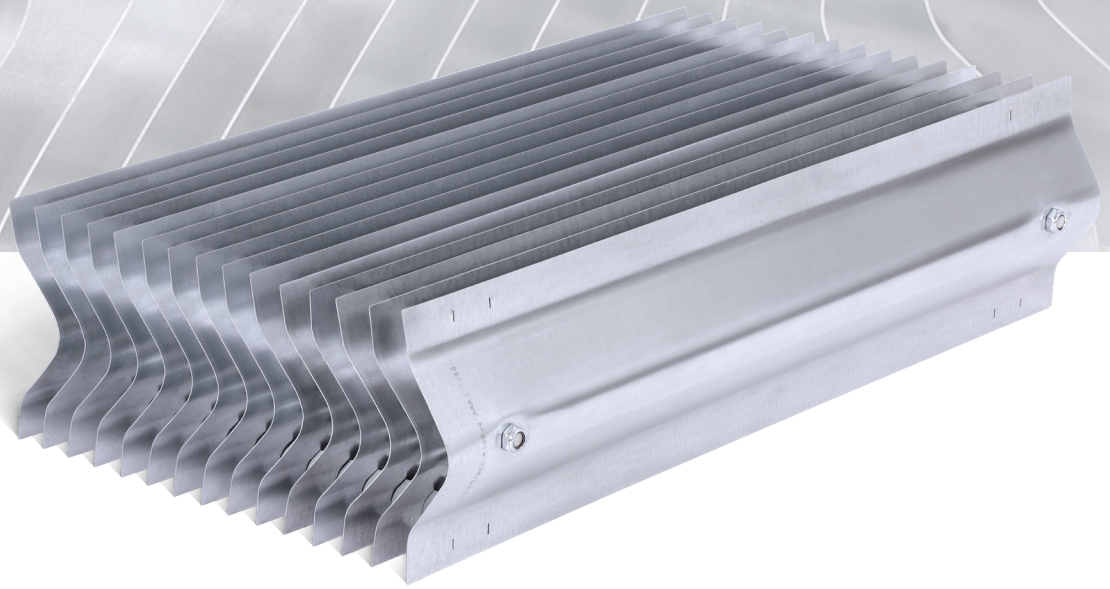




# METALLIC DRIFT ELIMINATORS

## ACCU-PAC®

For special applications where extreme temperatures or flammability concerns restrict the use of polymer materials, Brentwood has developed metallic versions of popular blade-style drift eliminators.



## Features

- Designed to handle extreme temperatures and applications.
- No replacement necessary as these products will last the lifetime of your tower.
- Blade design enables efficient drift removal at low pressure drop.
- Heavy-duty blades enable longer spans and long-term durability.
- Pairs well with Brentwood's CF1900SS film fill, the metallic version of the standard CF1900.
- Used in both counterflow and crossflow towers.



## Metallic Drift Eliminators

Brentwood’s AccuPac® Metallic Drift Eliminators have been designed to complement the CF1900SS, Brentwood’s stainless steel film fill offering. These products should be paired with one another and used in special applications where extreme temperatures or flammability concerns restrict the use of polymer materials.

Available in 304 stainless steel or hot dip galvanized steel, Brentwood’s patent-pending metallic drift eliminators are non-combustible and corrosion-resistant. All components are laser cut for precise fit and mechanically assembled using 304SS hardware. Their modular design allows for adjustable widths and custom-length packs to meet any job specifications.

Please contact Brentwood to discuss lead times, as the metallic drift eliminator products are built to order for your specific tower and application. Upon shipment, special handling is required due to the sharp nature of the parts.

### METALLIC DRIFT ELIMINATOR PRODUCT DETAILS

PRODUCT	BLADE SPACING	DEPTH	WIDTH*	LENGTH	BLADE THICKNESS	DRY WEIGHT	MAXIMUM SPAN	DRIFT RATING
<b>DE080SS**</b> <b>DE080HDG</b>	0.80" (20 mm)	5.75" (146 mm)	12.8" (325mm)	2-8 ft, increments of 1" (610-2,438 mm, increments of 25 mm)	18 mils (0.46 mm)	7.3 lbs/ft <sup>2</sup> (35.6 kg/m <sup>2</sup> )	8 ft (2,438 mm)	0.002%
<b>DE100SS</b> <b>DE100HDG</b>	1.0" (25 mm)	5.75" (146 mm)	13.0" (330 mm)	2-8 ft, increments of 1" (610-2,438 mm, increments of 25 mm)	18 mils (0.46 mm)	5.9 lbs/ft <sup>2</sup> (28.8 kg/m <sup>2</sup> )	8 ft (2,438 mm)	0.004%
<b>DE120SS</b> <b>DE120HDG</b>	1.2" (31 mm)	5.75" (146 mm)	13.2" (335 mm)	2-8 ft, increments of 1" (610-2,438 mm, increments of 25 mm)	18 mils (0.46 mm)	5.2 lbs/ft <sup>2</sup> (25.4 kg/m <sup>2</sup> )	8 ft (2,438 mm)	0.005%

\* Maximum pack width. Smaller packs available, down to a minimum of 2 blades plus 1 end spacer.

\*\* DE080SS has been third-party tested and is compliant with Eurovent performance standards. These standards are not linked with Brentwood’s published drift ratings. Brentwood participates in the ECP programme for Drift Eliminators. Check on-going validity of certificate: [www.eurovent-certification.com](http://www.eurovent-certification.com).



**BRENTWOOD INDUSTRIES, INC.**

brentwoodindustries.com  
coolingtower@brentw.com  
+1.610.236.1100

